



Raw Water Main  
&  
Golf Course Renovation

COMMUNITY DISCUSSION

January 21, 2021

Project Website:

<https://www.DBFLgolfandwatermain.com/>

# Obligations of the Focus Group:

- 1) Get educated on the project
- 2) Give us your honest input
- 3) Promote our discussion to the rest of your friends and colleagues!



# AGENDA

- About the Project
- Historical Summary
- Describe our Process
- Observations
- Ask questions



# THE PROJECT

1. Golf course renovation
2. Onsite raw water wells/portions of the onsite raw watermain replacement
3. Southern golf cart bridge to allow for 2-way traffic
4. North bridge repairs
5. New maintenance facility
6. Parking lot improvements





**Denis Placide**

City of Delray Beach



StaplesGolf







**John Sanford, ASGCA**

Golf Course Architect,  
Project Leader



StaplesGolf



**Fannie Howard, PE**

Kimley-Horn  
Project Engineer





**Andy Staples, ASGCA**

Golf Course Architect,  
Community Links



StaplesGolf



**Dr. Bradley Klein**

Golf Course Therapist,  
Ross/Wilson Expert







THE COMMUNITY LINKS® WHITE PAPER  
The time has come for struggling Municipal golf facilities to innovate, or close.

By Andy Staples, Staples Golf Design  
Scottsdale Arizona  
Spring 2010



The Old Course at St. Andrews Scotland







# A Model Muni: Rockwind Community Links

USGA



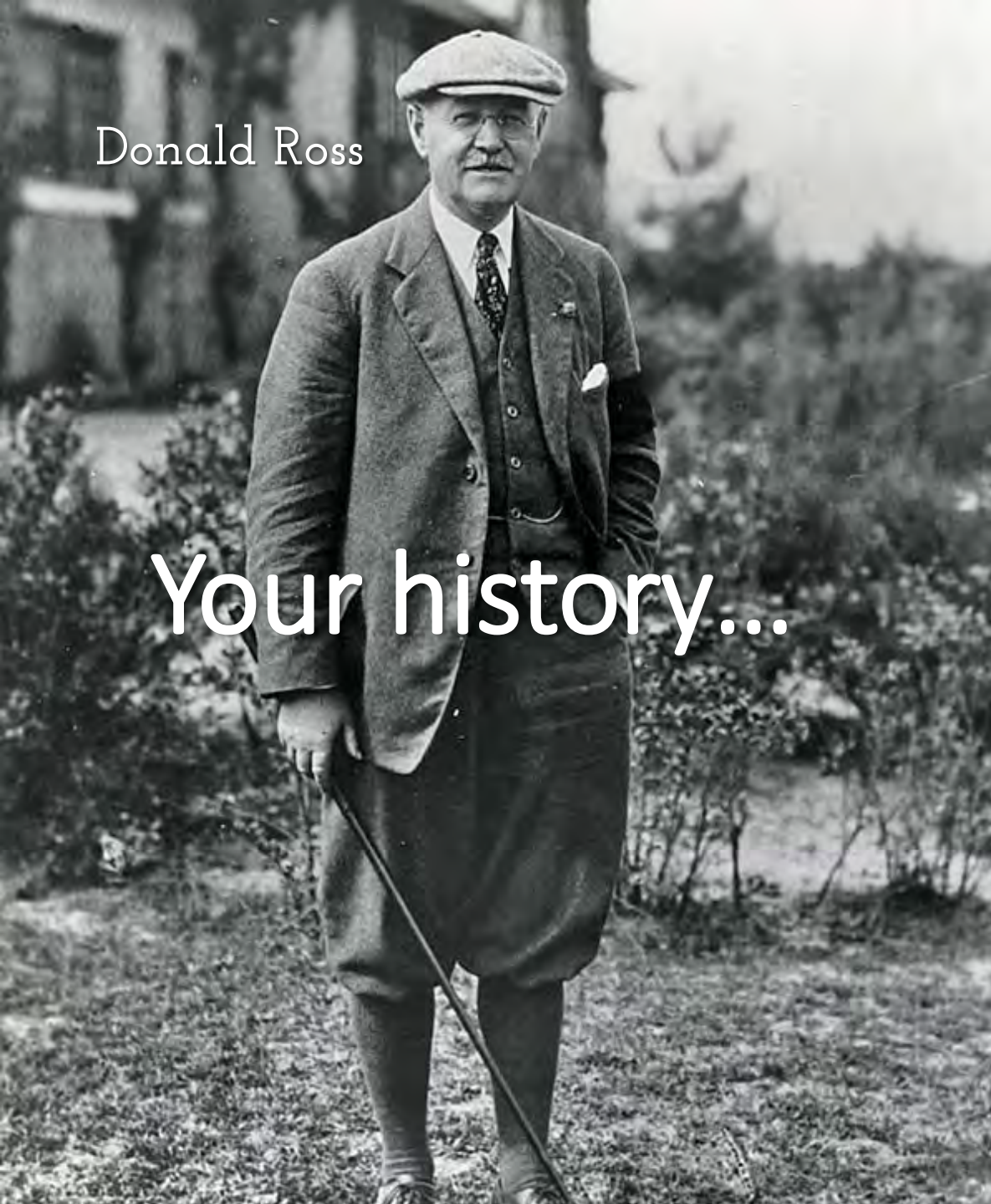
SHARE



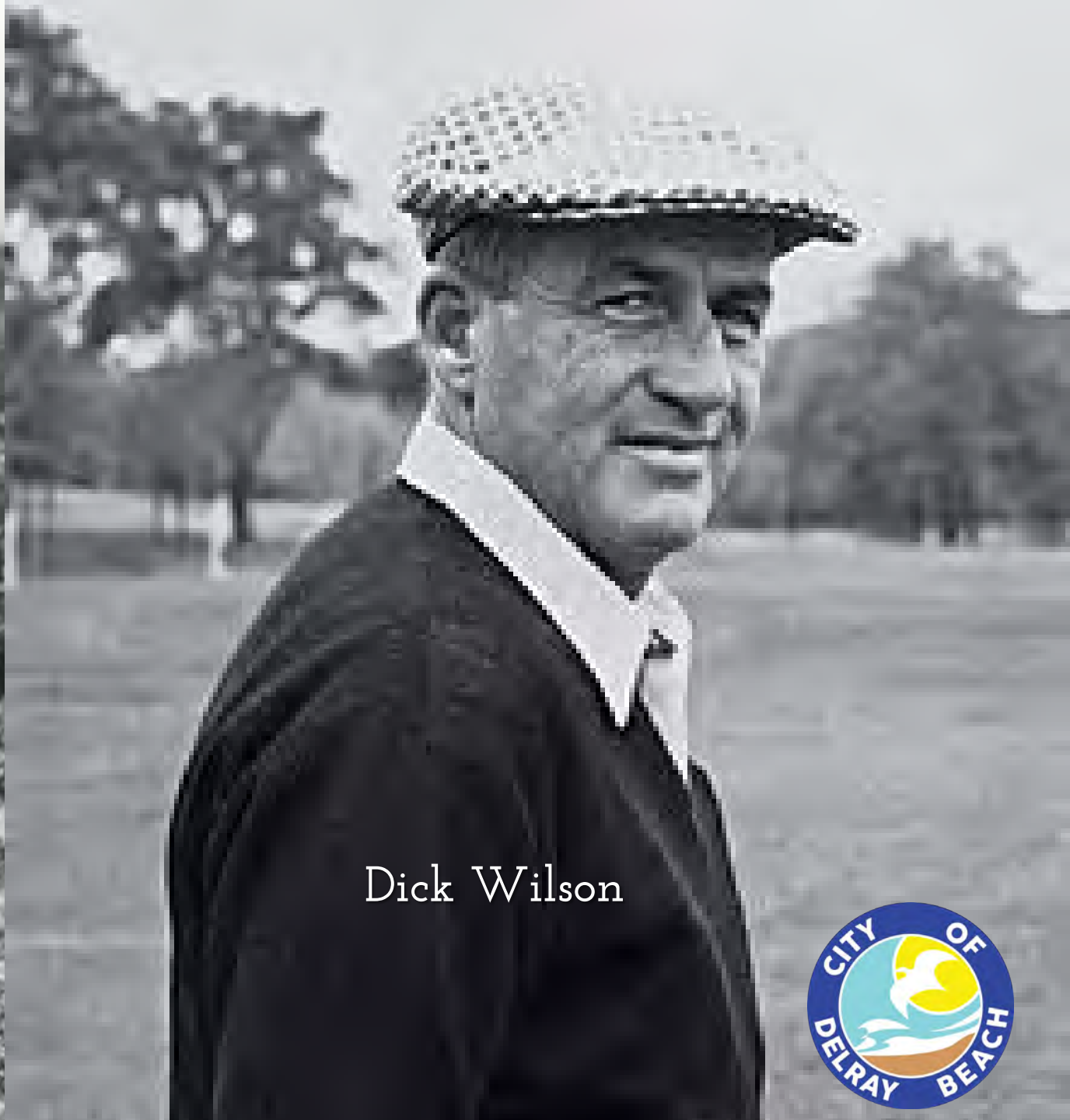


Donald Ross

Your history...



Dick Wilson





MUNICIPAL GOLF COURSE

DELRAY, FLORIDA

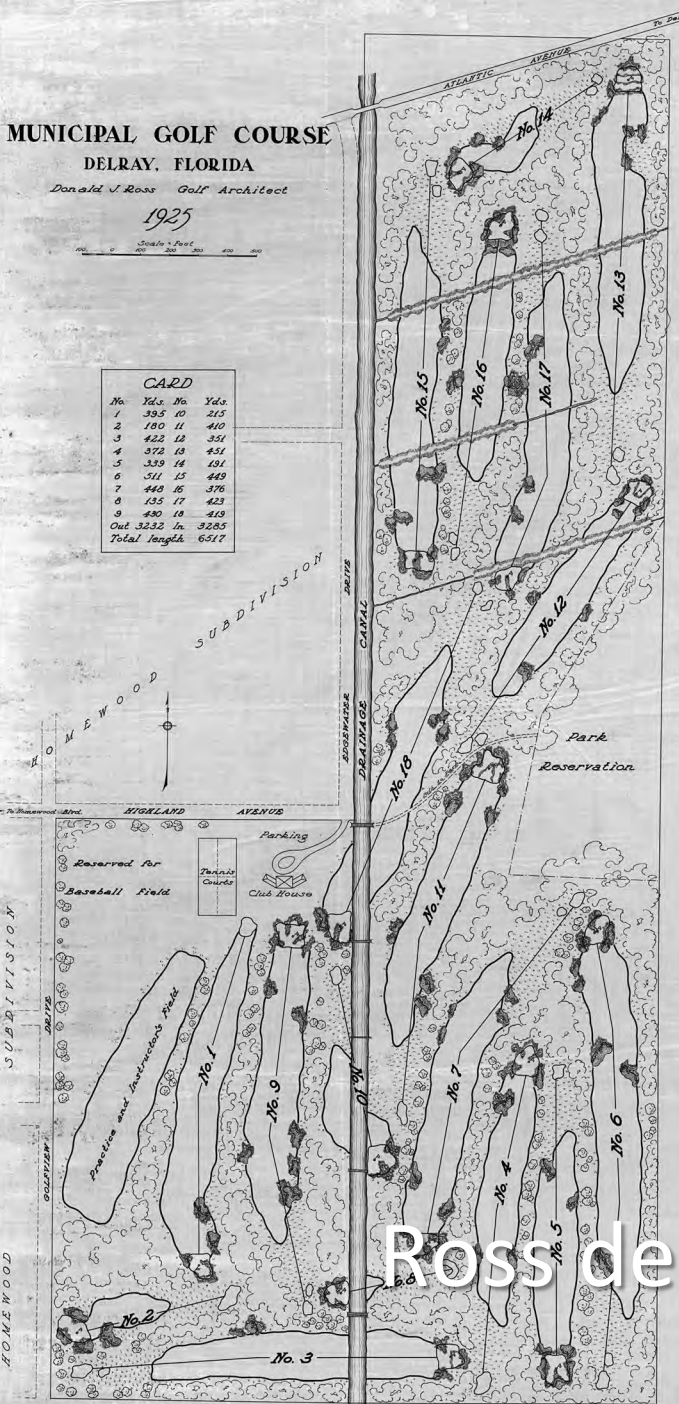
Donald J. Ross Golf Architect

1925

Scale - Feet  
0 100 200 300 400

CARD

No.	Yds.	No.	Yds.
1	395	10	215
2	180	11	410
3	422	12	331
4	372	13	451
5	339	14	181
6	511	15	449
7	440	16	376
8	135	17	423
9	480	18	413
Out 3232 in 3285			
Total length 6517			



Ross design & layout







Wilson Delray Beach layout



Pine Tree



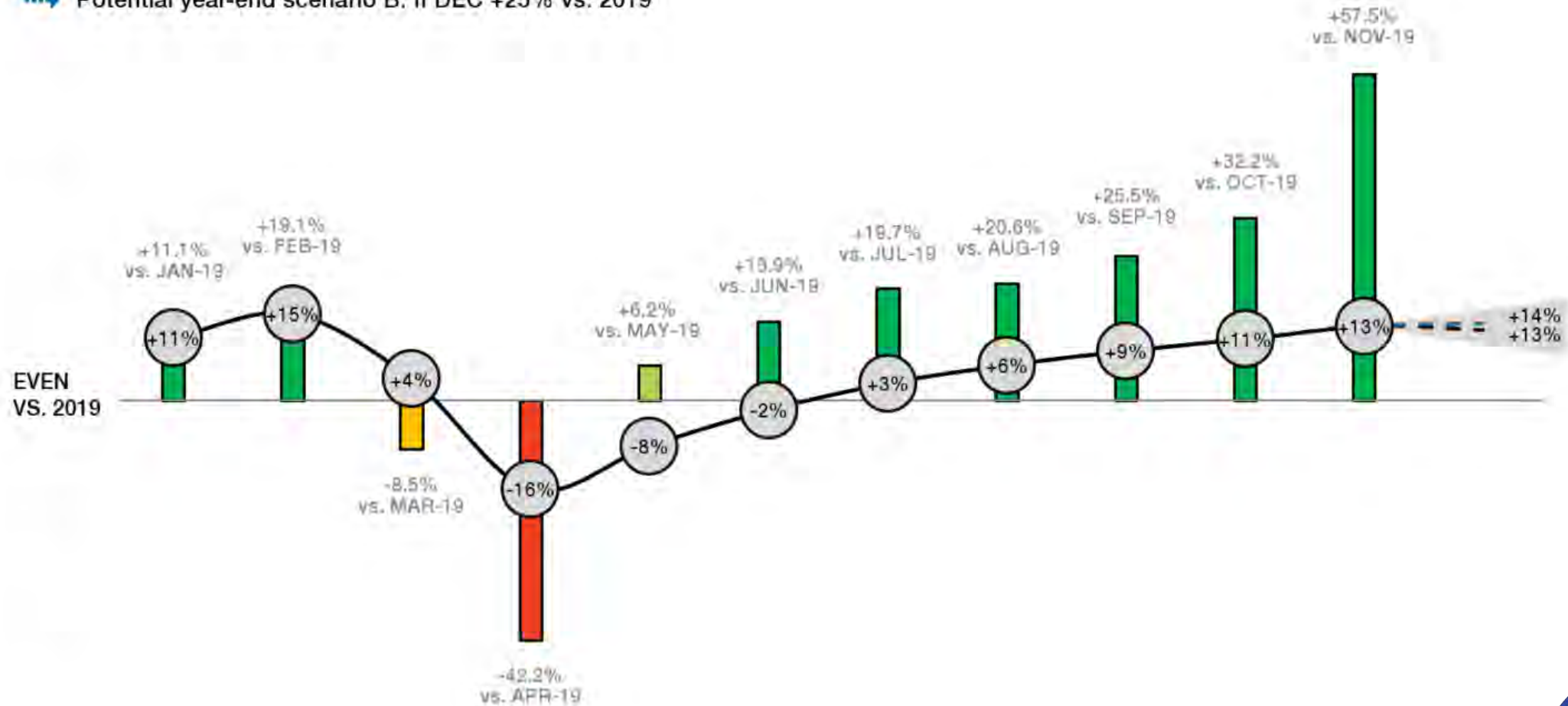
Hole-in-the-Wall





# Actual & Potential COVID-19 Effects on U.S. Golf Rounds

- Actual monthly changes vs. 2019<sup>1</sup>
- Actual YTD changes (JAN-NOV) vs. 2019<sup>1</sup>:
- Potential year-end scenario A: If DEC flat vs. 2019<sup>2</sup>
- Potential year-end scenario B: If DEC +25% vs. 2019



Source: National Golf Foundation

1. YTD data source: Golf Datatech

2. With rounds in November up 58% vs. same period 2019, our "flat rest of year" year-end projection improves from +10% to +13%.







Practice facilities





The latest technology



QUIT	11:00
RANGE MAP	24 deg
108 yds	60 ft
95 yds	5 sec
92 yds	51 deg
81 mph	49 ft
29 s	



# Himalayas Putting Course







Kids Course





The Vision



# The Process – Design, Golf Course

## Phase 1: Gather Data (current action)

- *Reports can be found on website*

## Phase 2: Develop the plan

- *Through summer of 2021*
- *Community Mtg #2 (June?)*

## Phase 3: Permitting & Bidding

- *Estimated to be completed by September 2021*





# The Process – Construction

- ✓ Pending Council approval of the Budget
- ✓ Understand the effects of disruption
- ✓ Attempt to have 9 holes open as long as possible
- ✓ See Project Website for updates







# OBSERVATIONS





Sandy soil!





Drainage problems – Ross





Drainage problems – Wilson





Exotic/ nuisance vegetation – Ross





Exotic/ nuisance vegetation – Wilson





Practice areas





Practice areas





# Safety - Ross

Range

10

18

16

15

13

14

17

11

12





# Safety – Wilson





Community space





Shelters/Restrooms





# Our initial design thoughts...

1. Respect the Ross/Wilson heritage, flip the 9's
2. Improve the quality of the golf experience
3. Fun, playable for all levels of skill
4. Expand the range/practice, SGA practice area
5. Increase outdoor community spaces
6. Clear exotic/nuisance vegetation
7. Improve restrooms, shelters





THANKS!

Project Website:

<https://www.DBFLgolfandwatermain.com/>