



Donald Ross - 1926
Dick Wilson - 1950

HISTORIC DOCUMENTATION PLANS

for:

Delray Beach Golf Club
Delray Beach, Florida

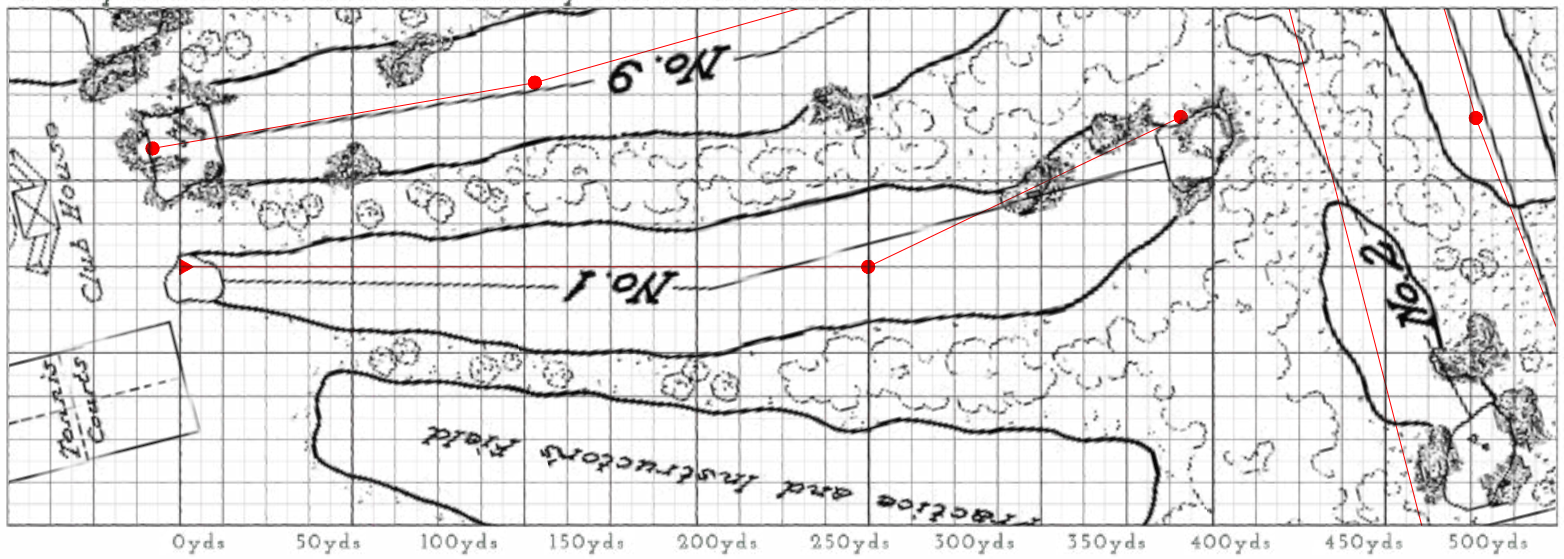
Prepared by:
Sanford Golf Design

DECEMBER 1, 2020

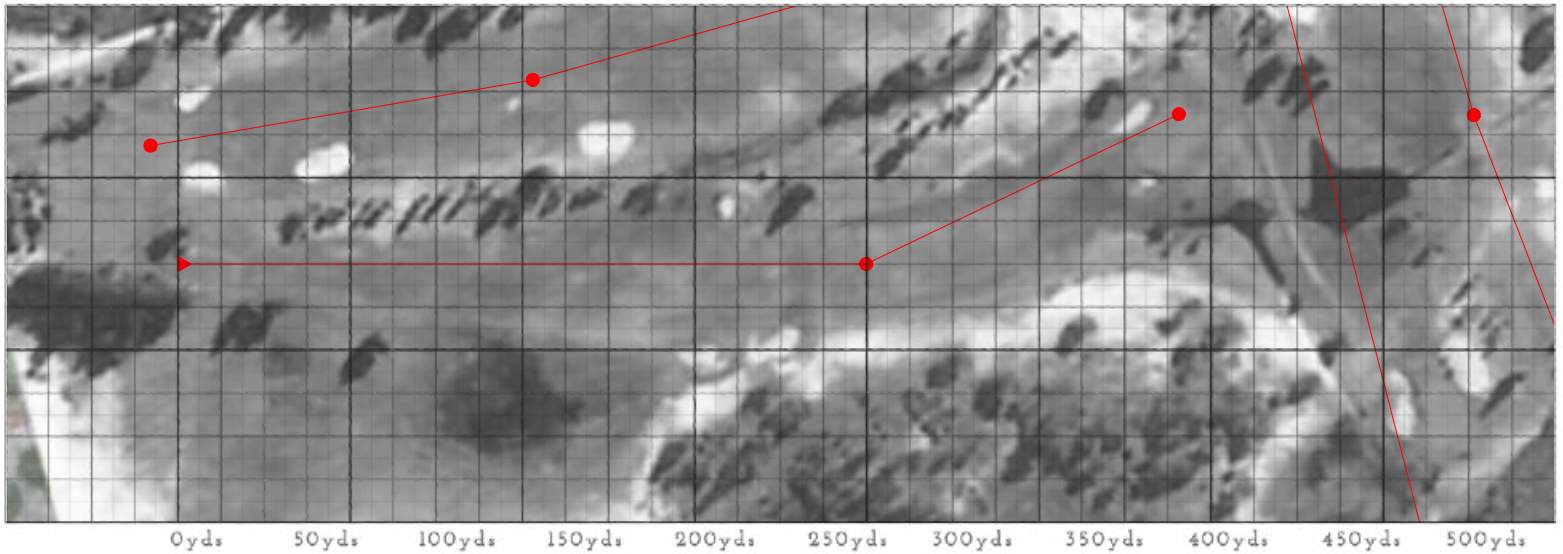
for:



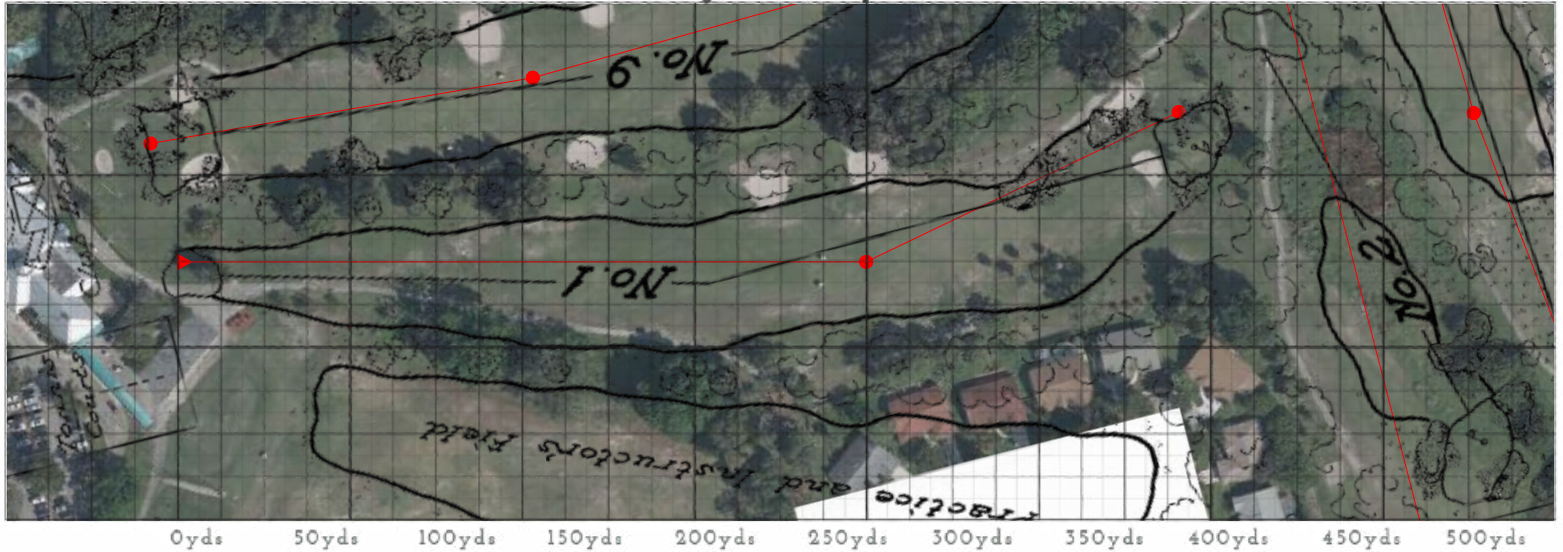
Delray Beach Golf Club as drawn by Donald Ross in 1925



1953 Aerial Photo



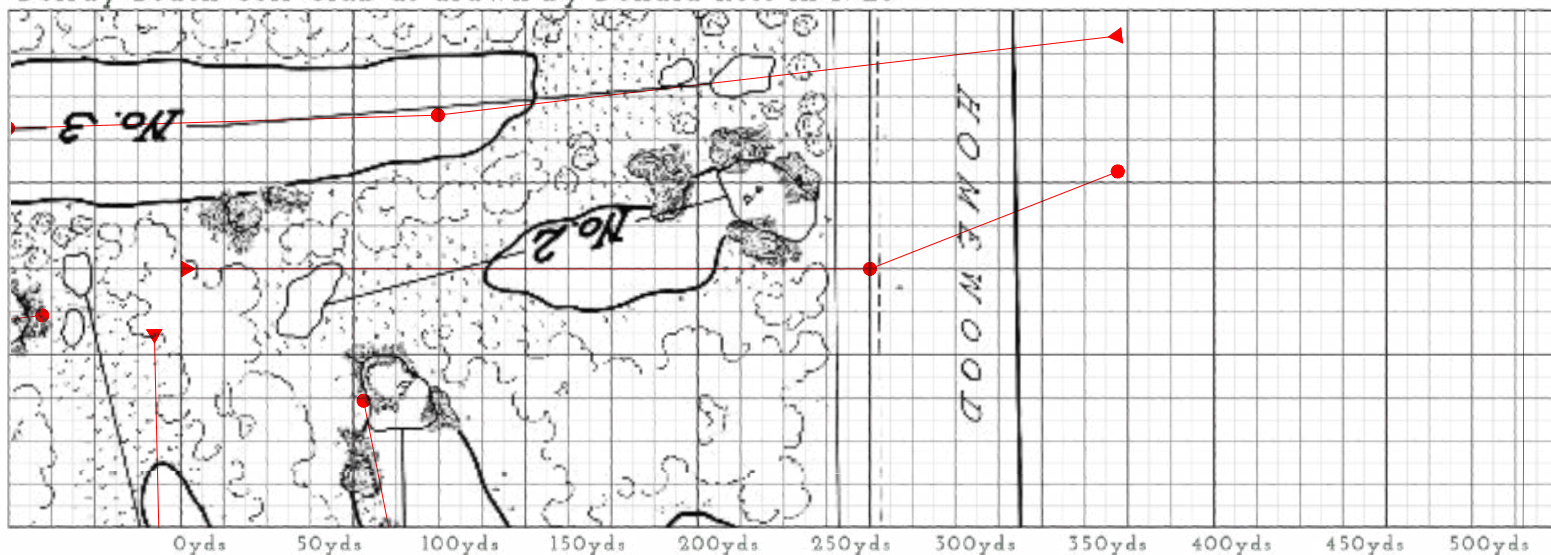
1925 Ross sketch overlaid onto a current Google aerial photo



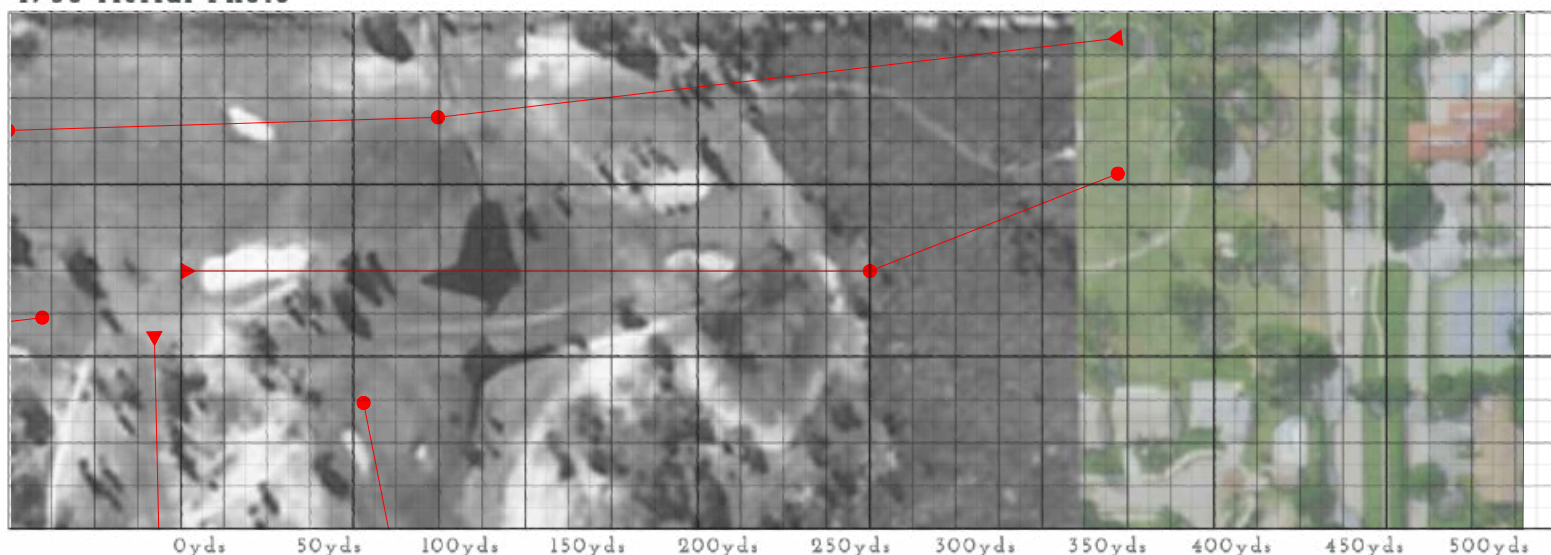
Delray Beach Golf Club
HISTORICAL DOCUMENTATION PLAN
November 2020 - for discussion purposes only

Hole #
1

Delray Beach Golf Club as drawn by Donald Ross in 1925



1953 Aerial Photo



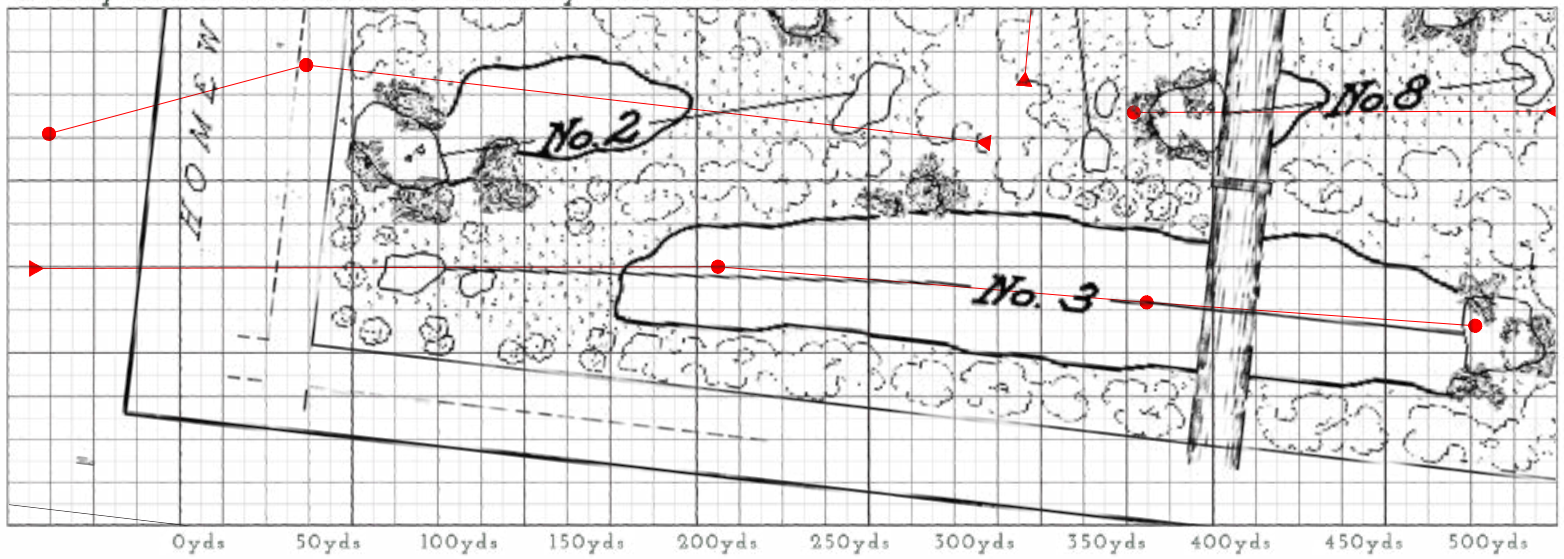
1925 Ross sketch overlaid onto a current Google aerial photo



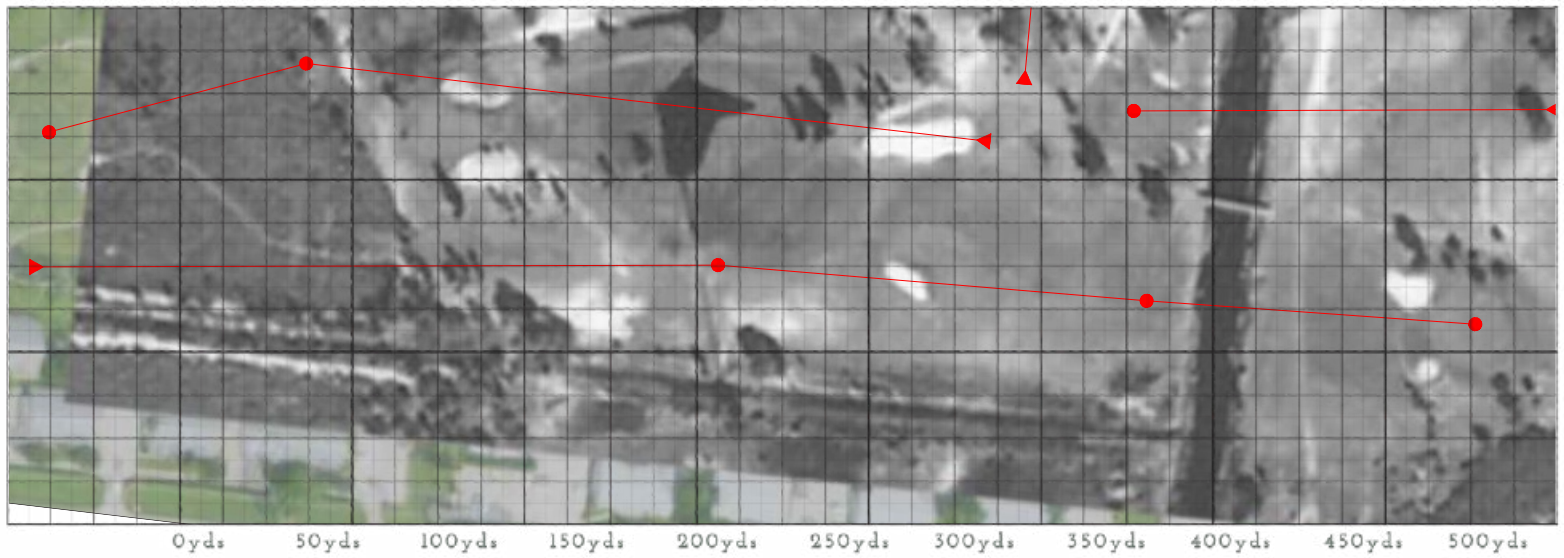
Delray Beach Golf Club
HISTORICAL DOCUMENTATION PLAN
November 2020 - for discussion purposes only

Hole #
2

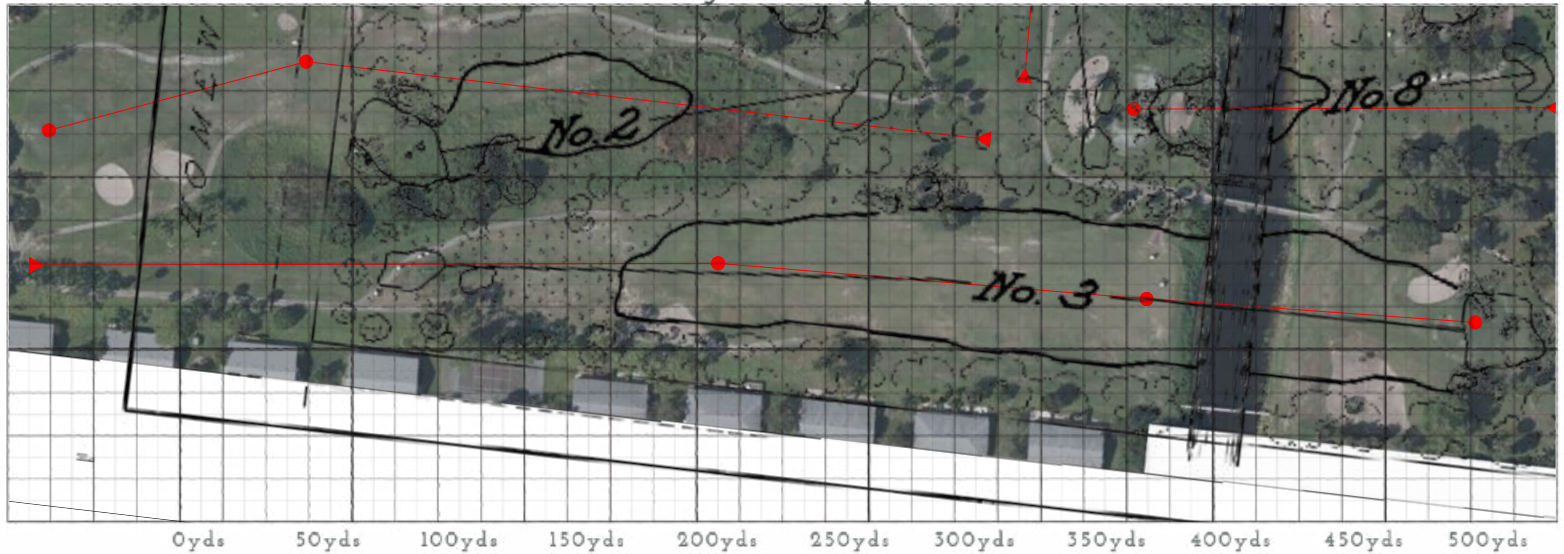
Delray Beach Golf Club as drawn by Donald Ross in 1925



1953 Aerial Photo



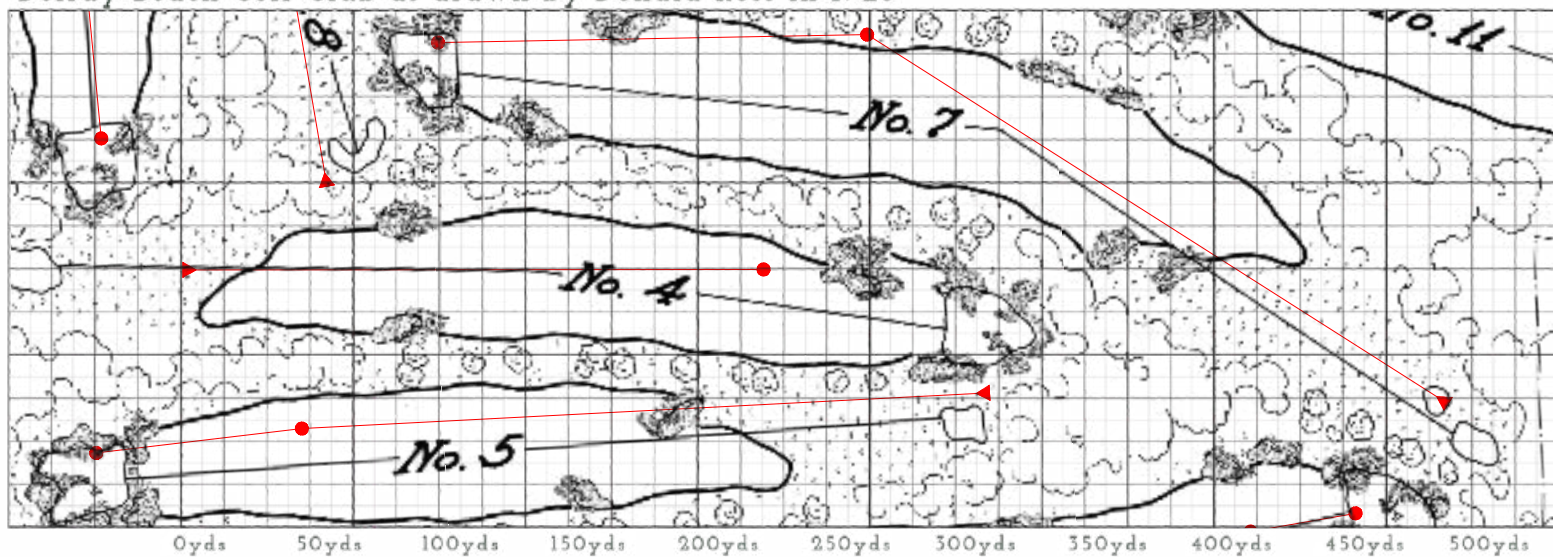
1925 Ross sketch overlaid onto a current Google aerial photo



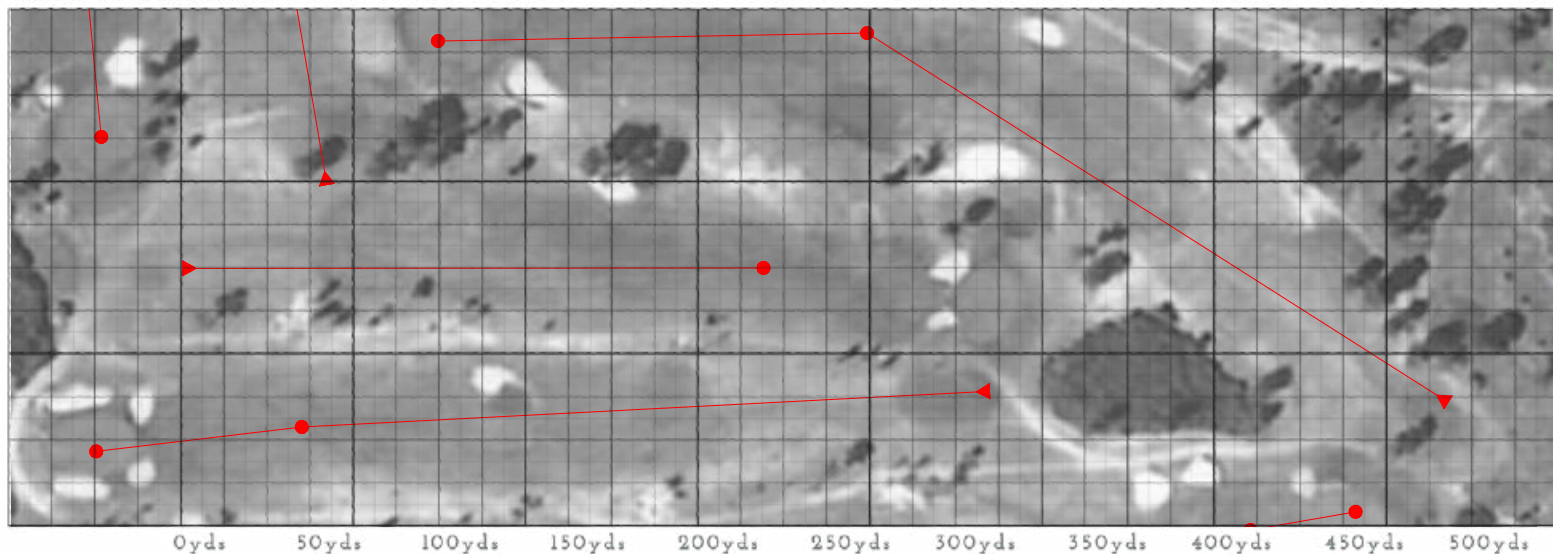
Delray Beach Golf Club
HISTORICAL DOCUMENTATION PLAN
November 2020 - for discussion purposes only

Hole #
3

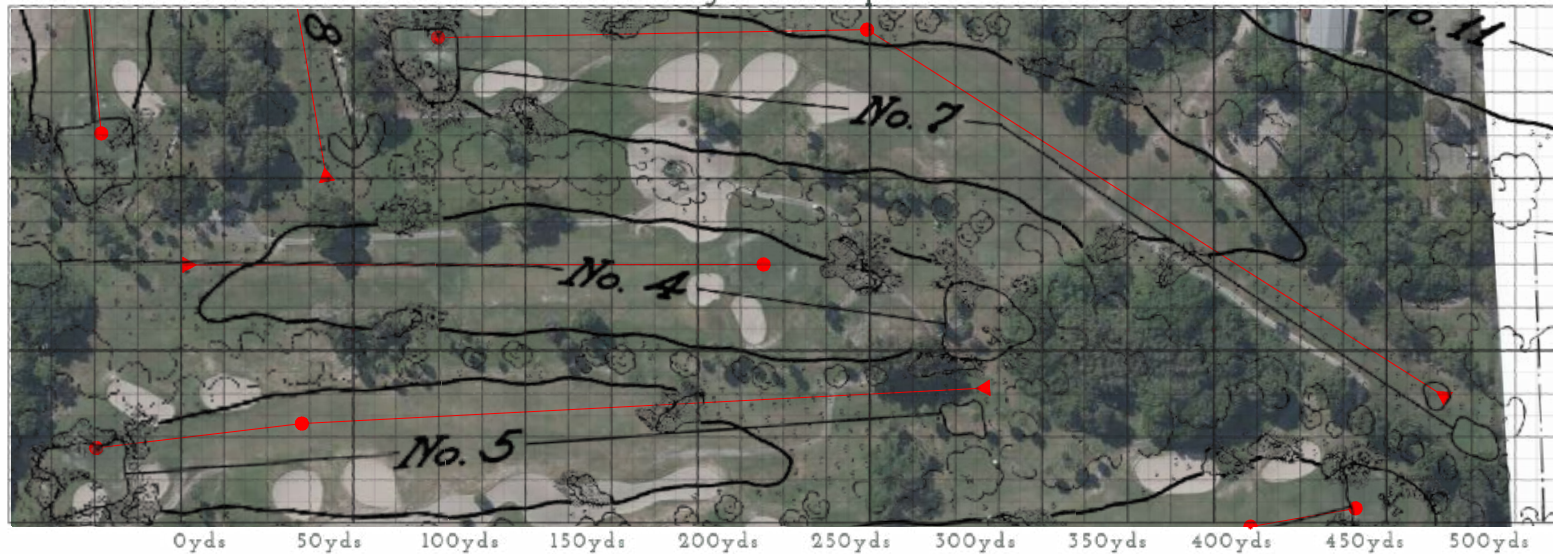
Delray Beach Golf Club as drawn by Donald Ross in 1925



1953 Aerial Photo



1925 Ross sketch overlaid onto a current Google aerial photo

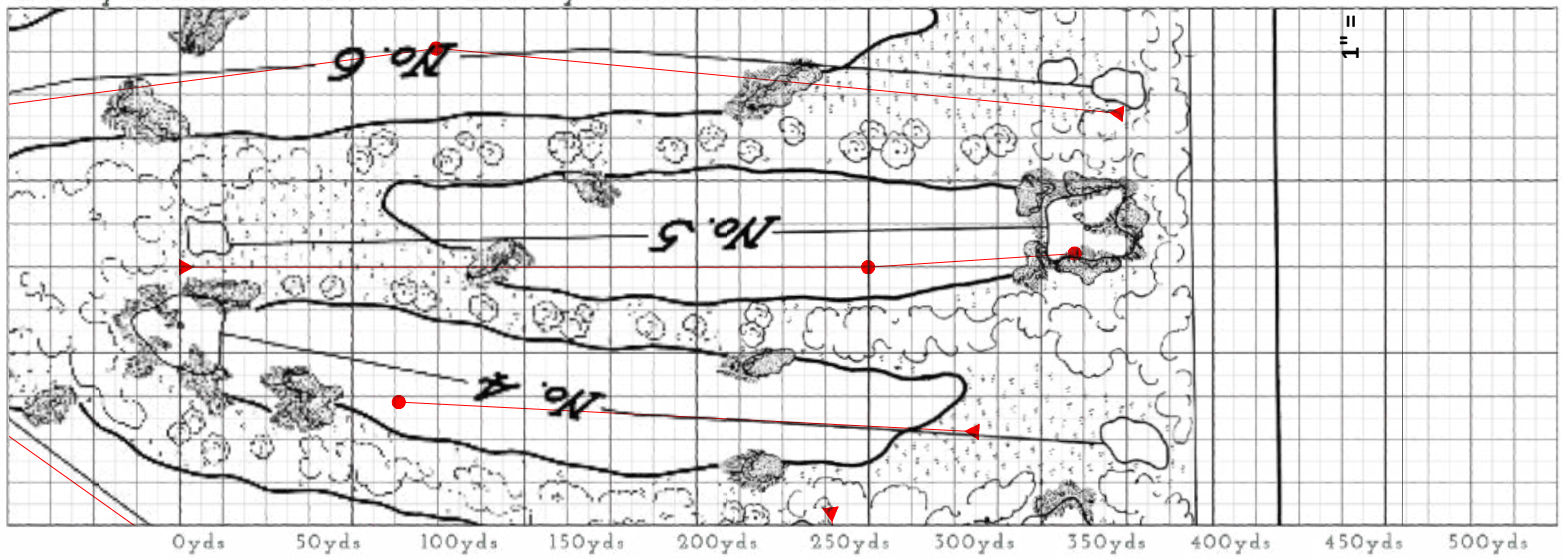


Delray Beach Golf Club
HISTORICAL DOCUMENTATION PLAN
November 2020 - for discussion purposes only

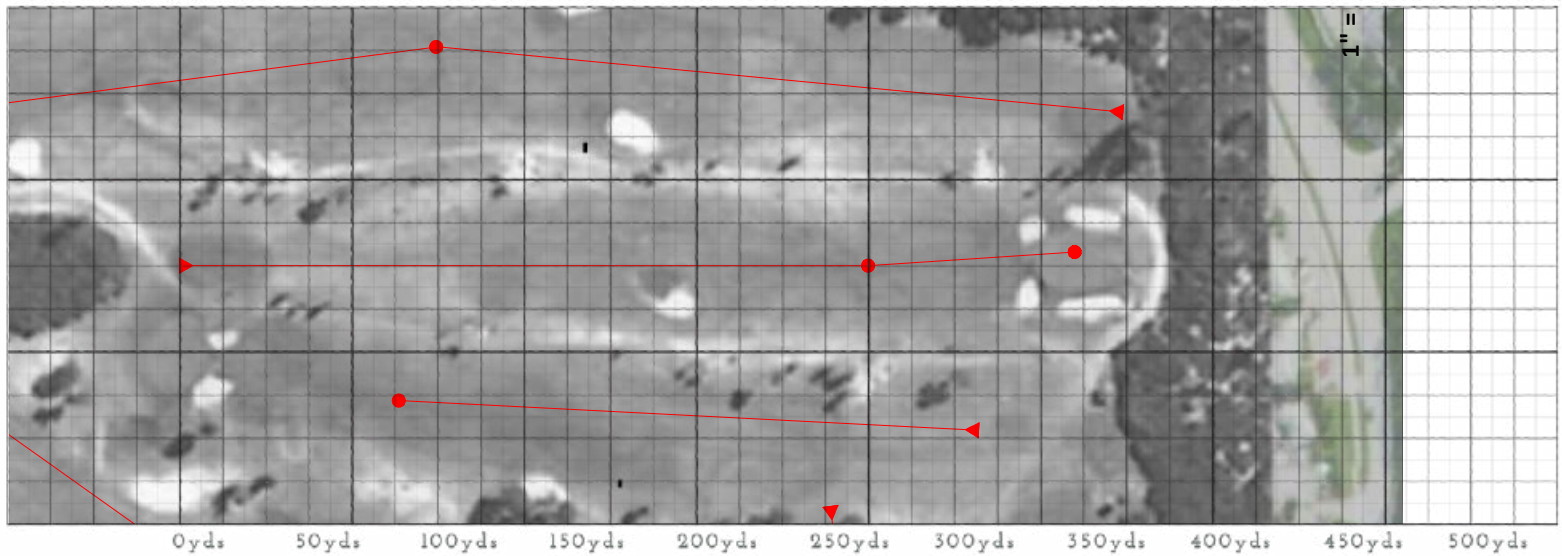
Hole #

4

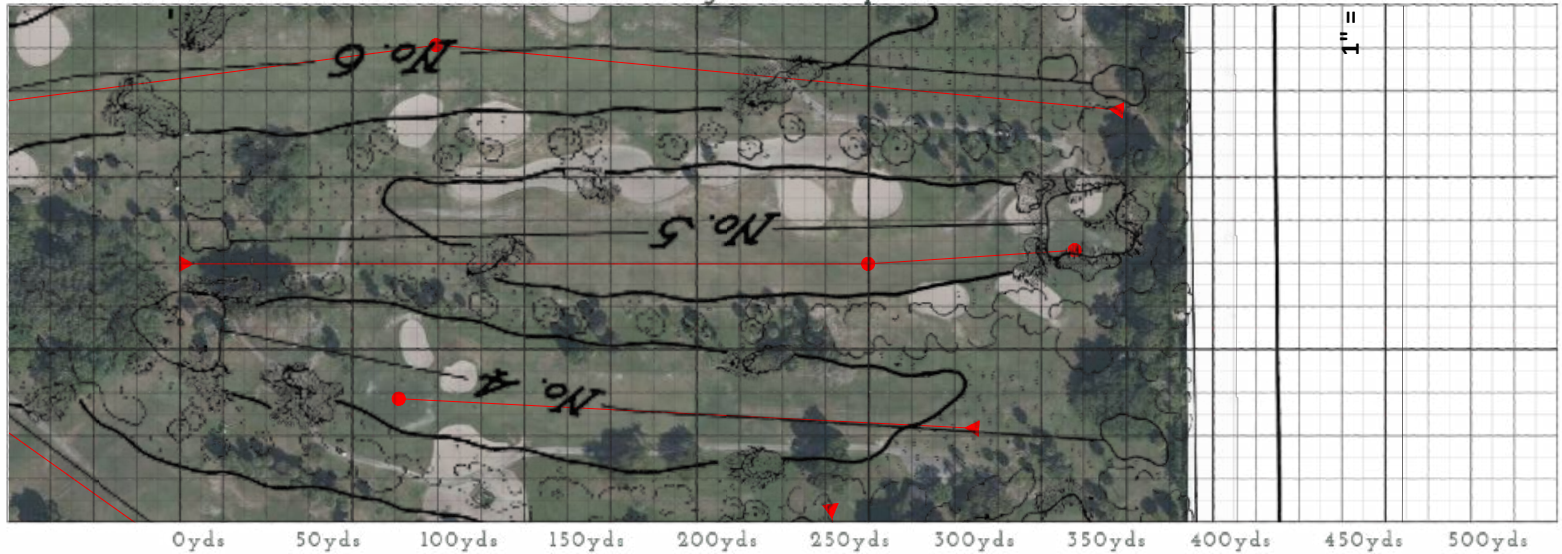
Delray Beach Golf Club as drawn by Donald Ross in 1925



1953 Aerial Photo



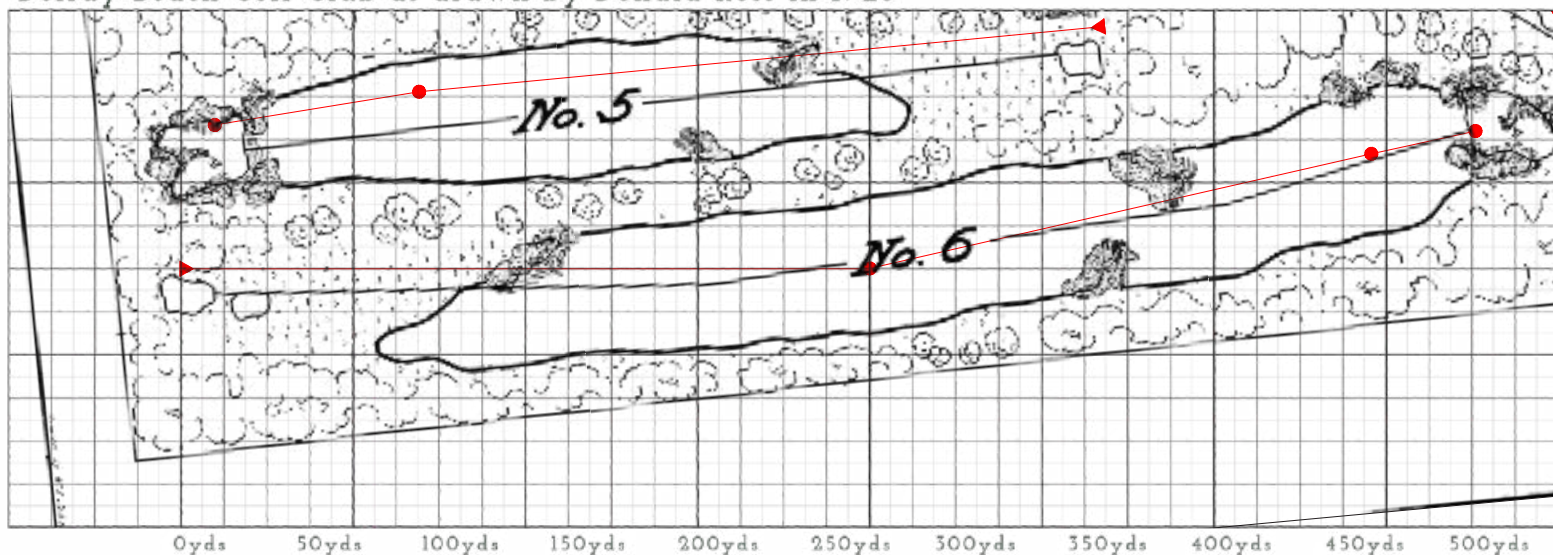
1925 Ross sketch overlaid onto a current Google aerial photo



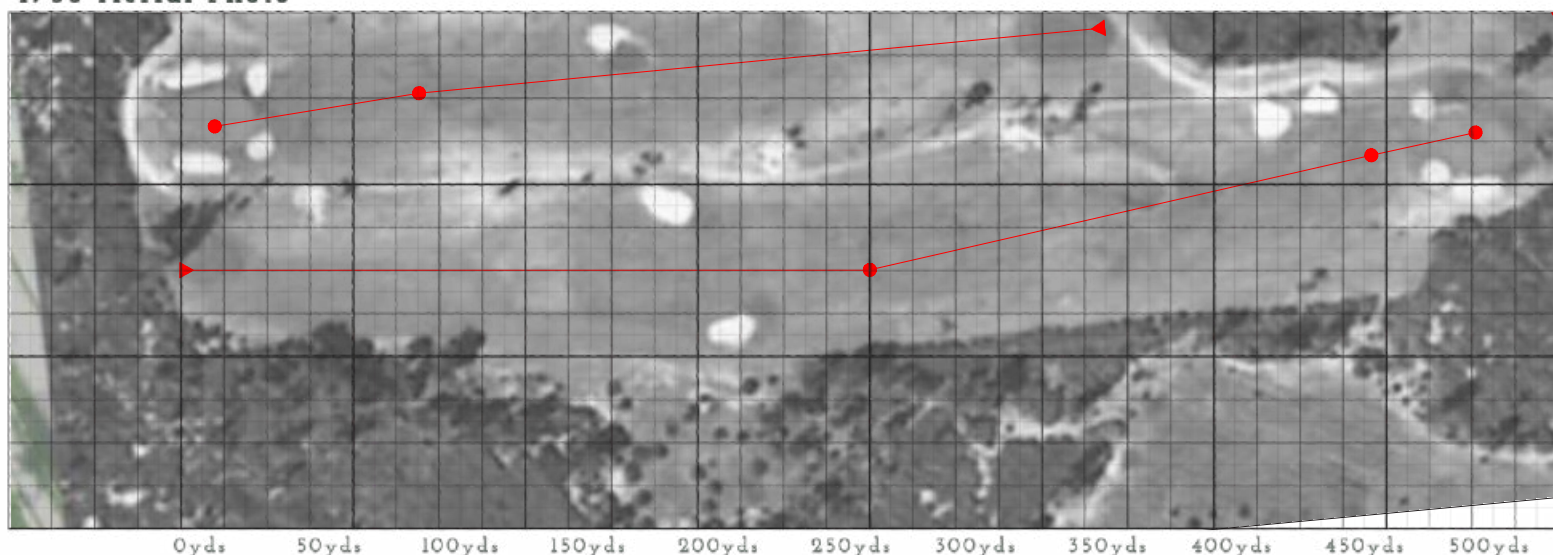
Delray Beach Golf Club
HISTORICAL DOCUMENTATION PLAN
November 2020 - for discussion purposes only

Hole #
5

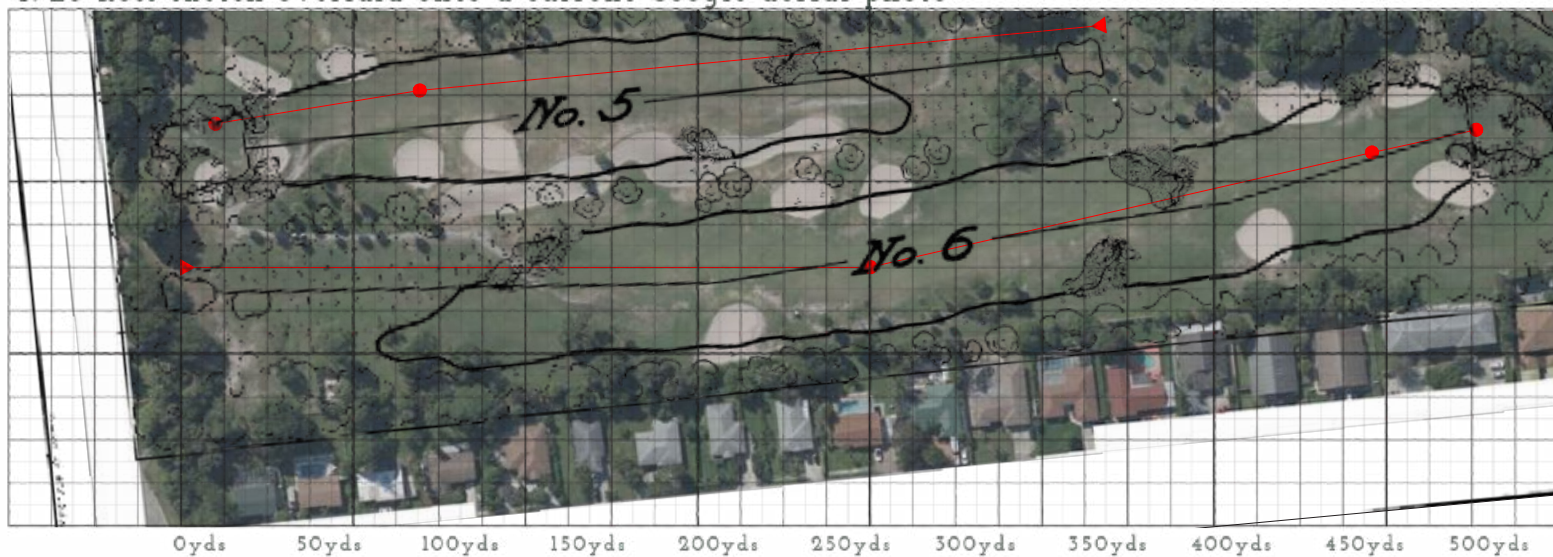
Delray Beach Golf Club as drawn by Donald Ross in 1925



1953 Aerial Photo



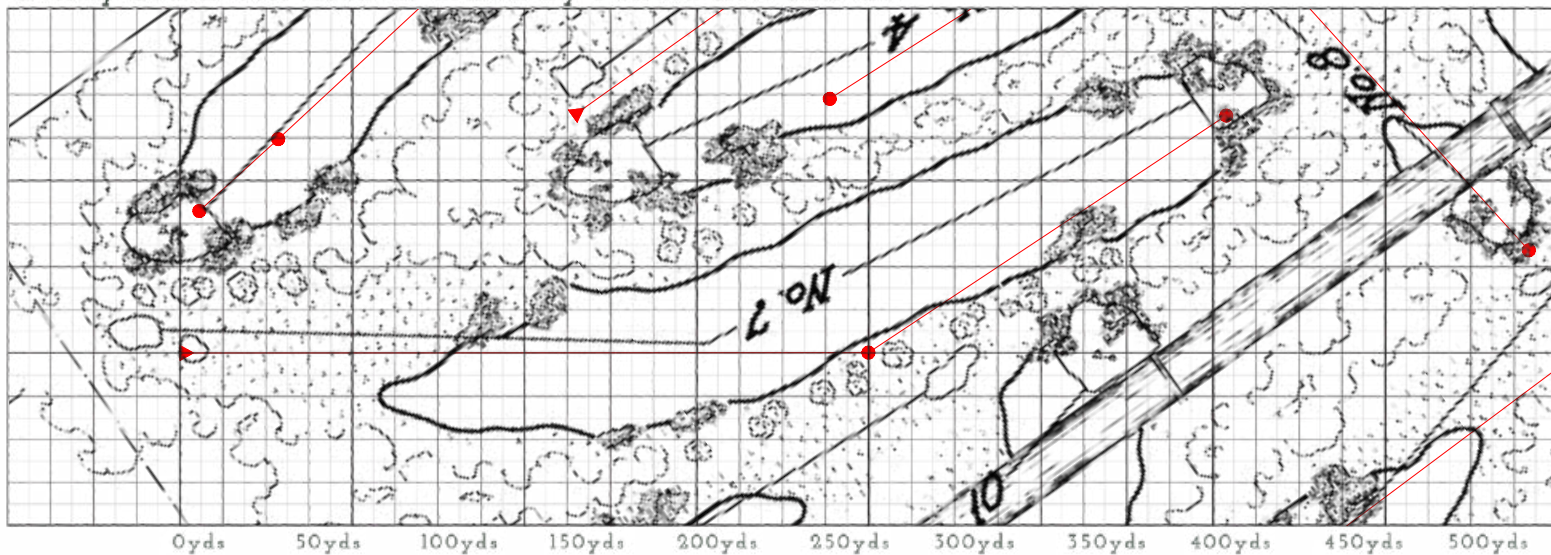
1925 Ross sketch overlaid onto a current Google aerial photo



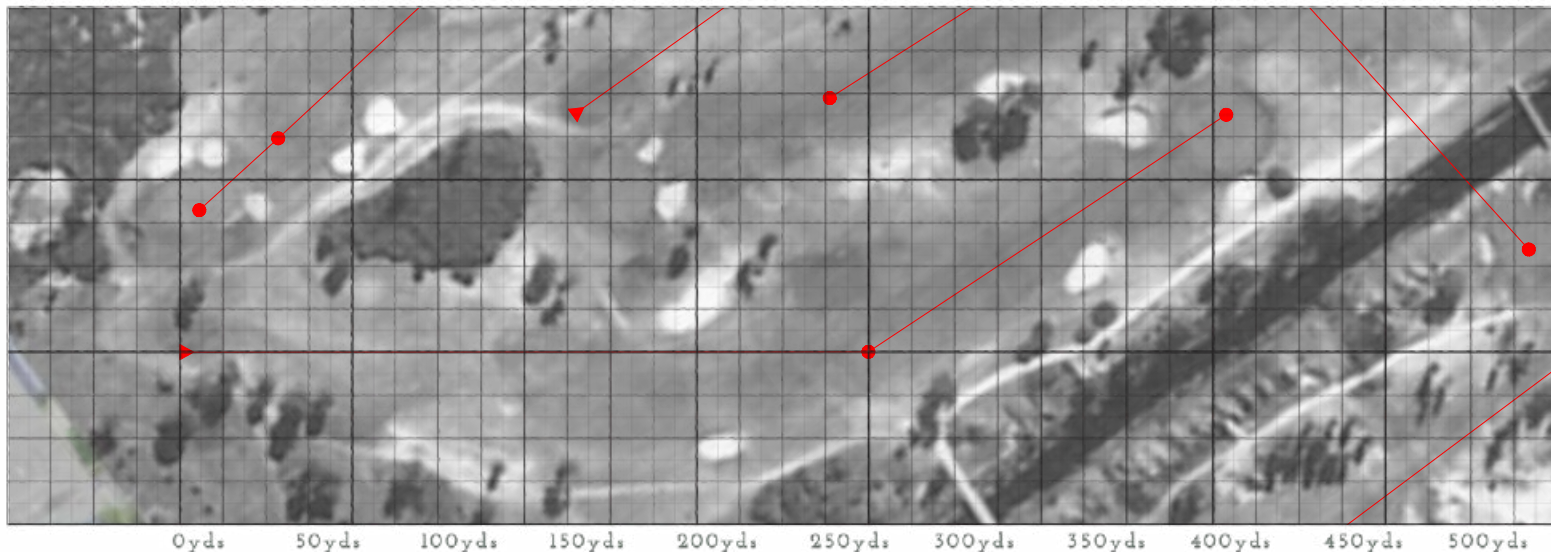
Delray Beach Golf Club
HISTORICAL DOCUMENTATION PLAN
November 2020 - for discussion purposes only

Hole #
6

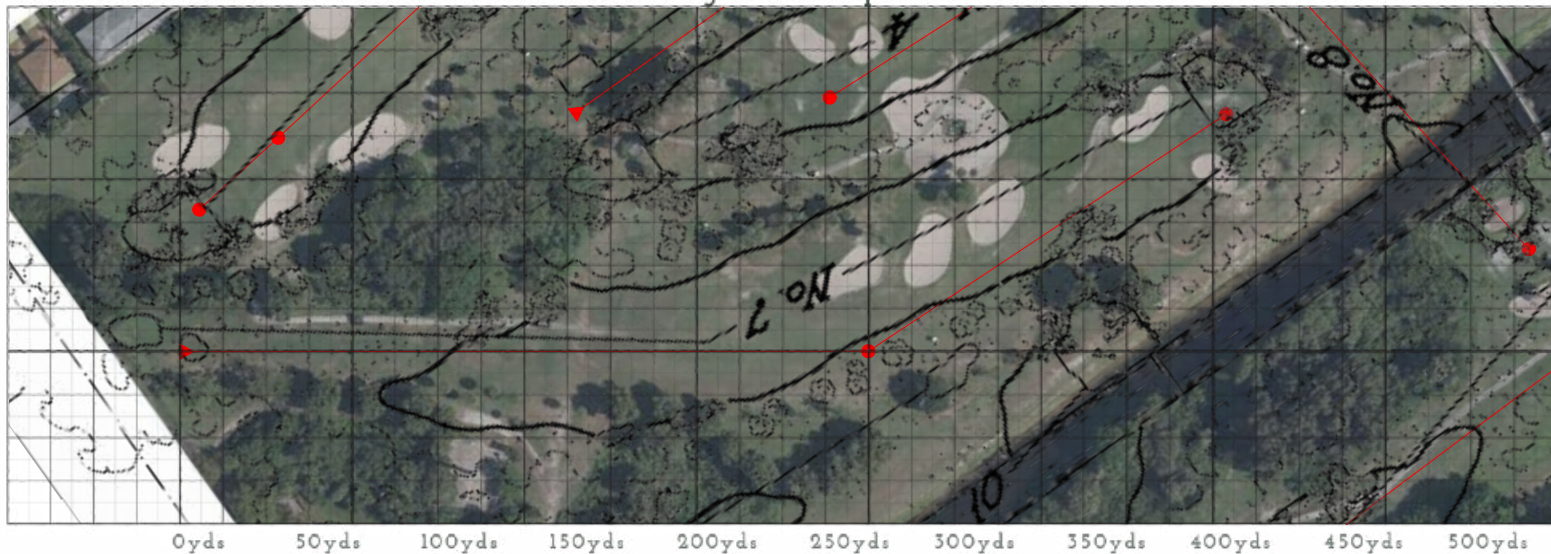
Delray Beach Golf Club as drawn by Donald Ross in 1925



1953 Aerial Photo



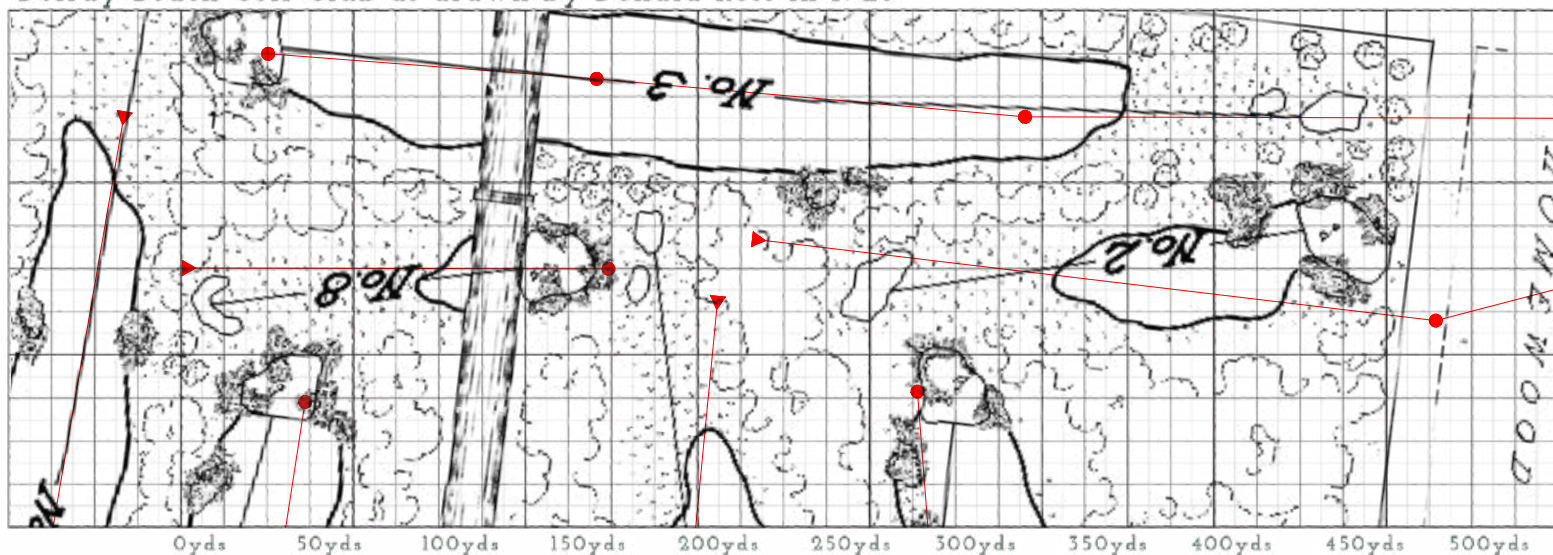
1925 Ross sketch overlaid onto a current Google aerial photo



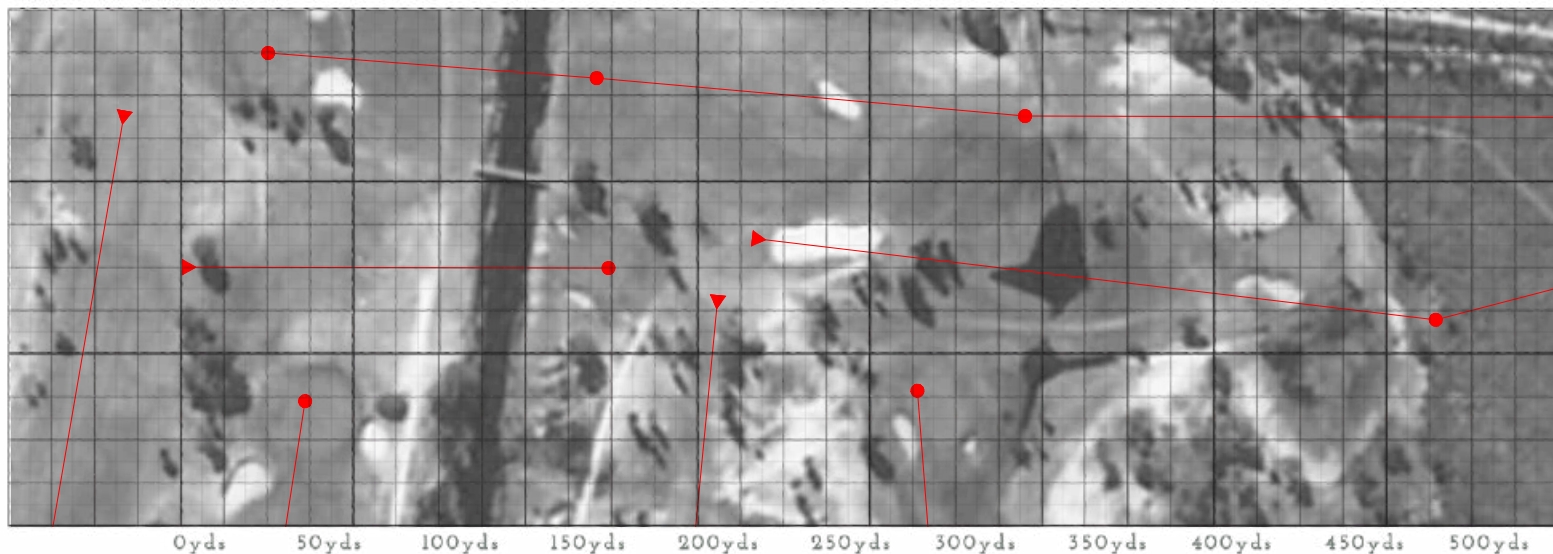
Delray Beach Golf Club
HISTORICAL DOCUMENTATION PLAN
November 2020 - for discussion purposes only

Hole #
7

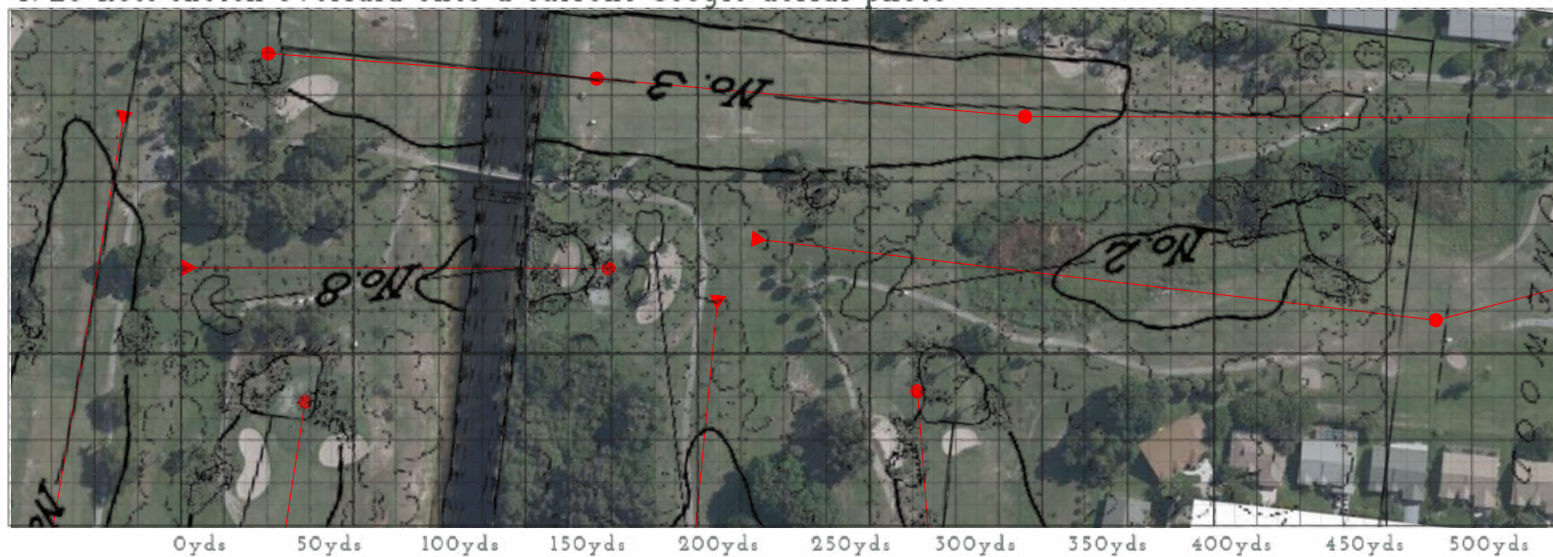
Delray Beach Golf Club as drawn by Donald Ross in 1925



1953 Aerial Photo



1925 Ross sketch overlaid onto a current Google aerial photo

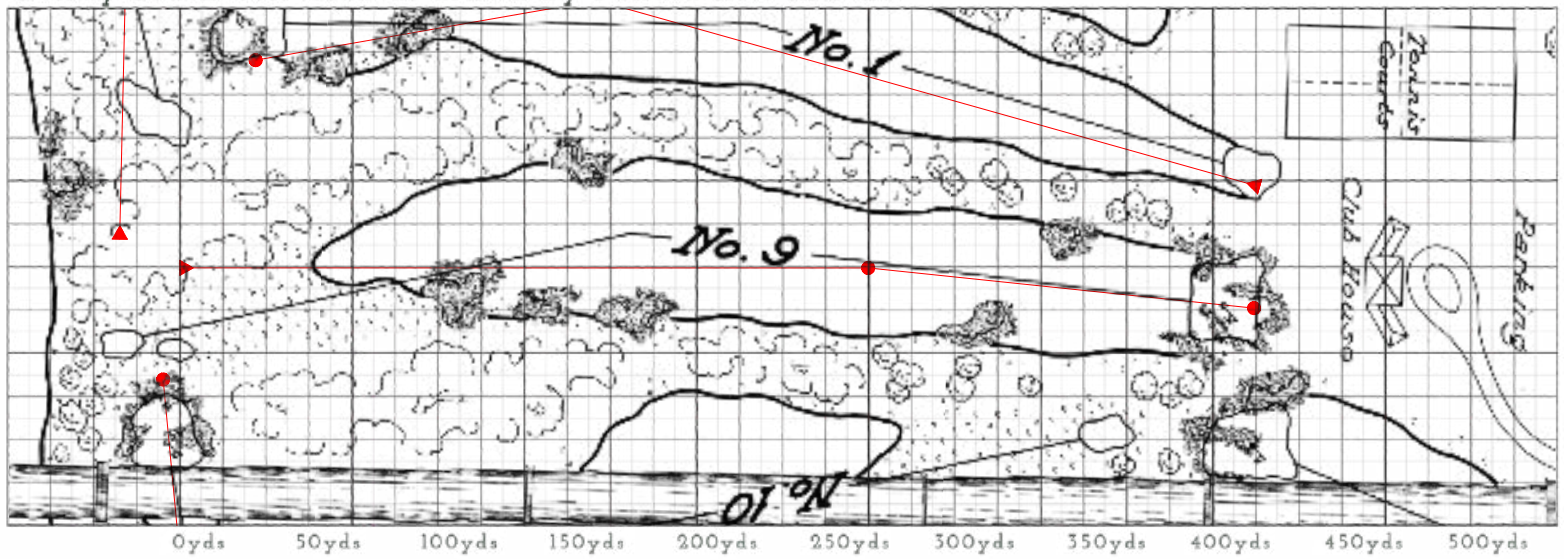


Delray Beach Golf Club
HISTORICAL DOCUMENTATION PLAN
November 2020 - for discussion purposes only

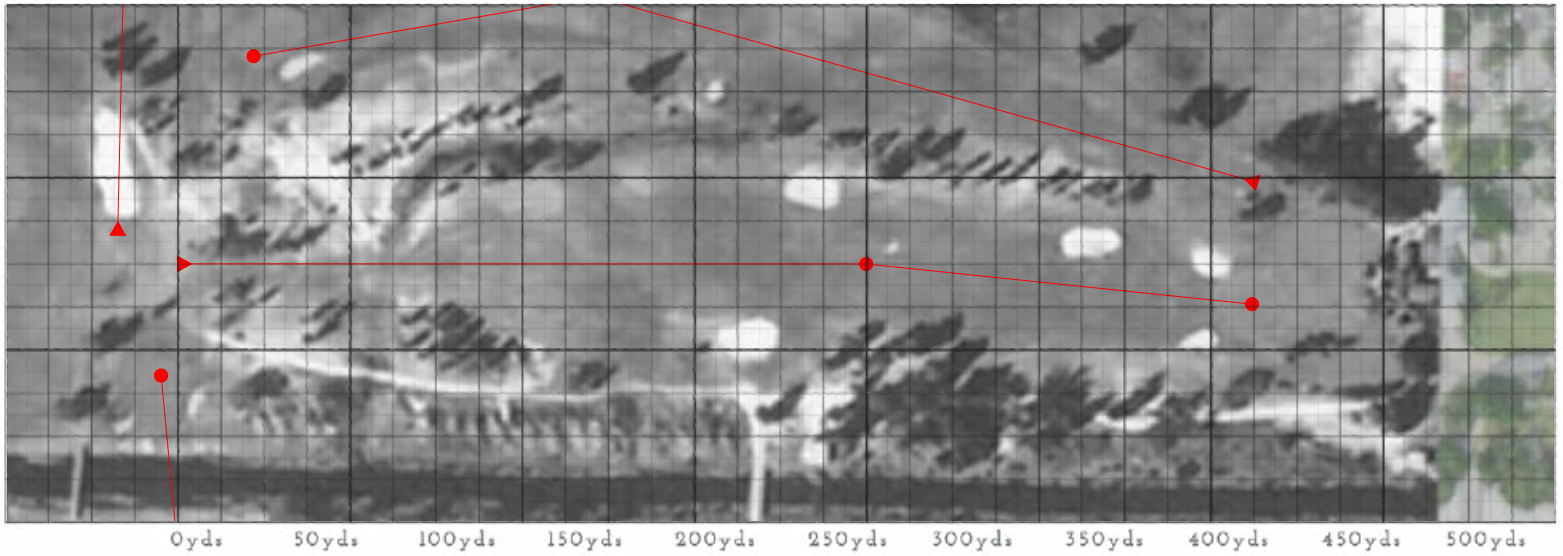
Hole #

8

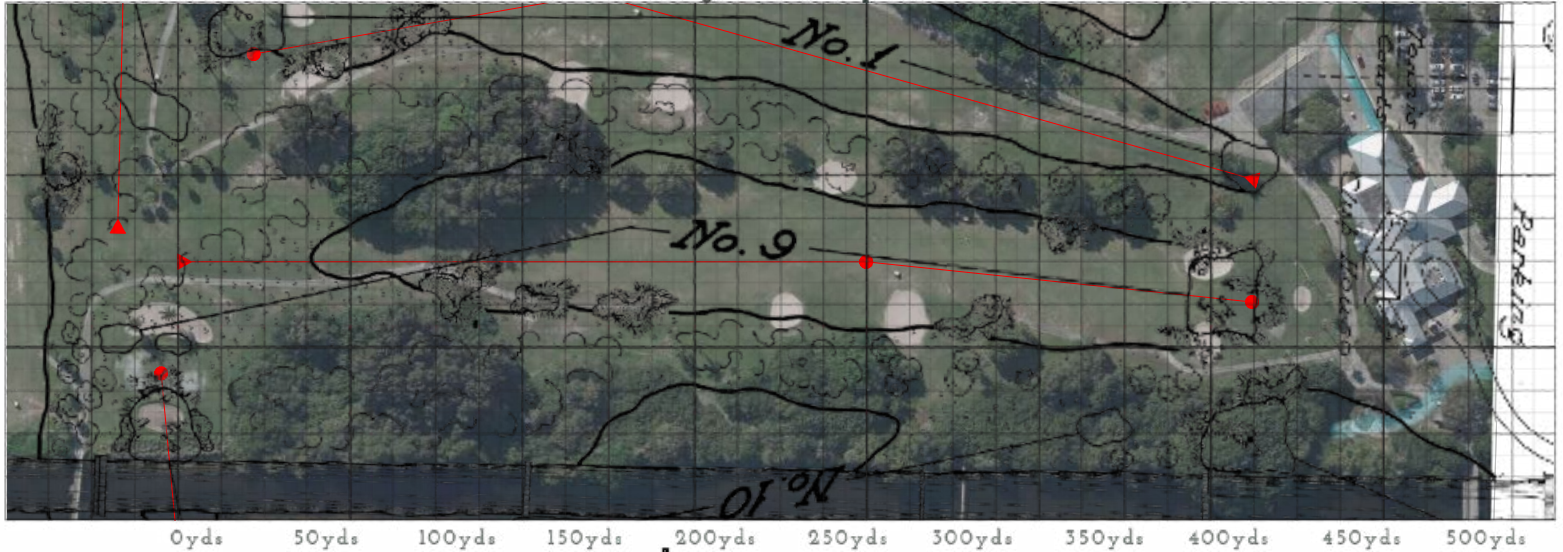
Delray Beach Golf Club as drawn by Donald Ross in 1925



1953 Aerial Photo



1925 Ross sketch overlaid onto a current Google aerial photo



Delray Beach Golf Club
HISTORICAL DOCUMENTATION PLAN
November 2020 - for discussion purposes only

Hole #
9



Hole No. 10 Par 5

Original Yardage
550

Dick Wilson

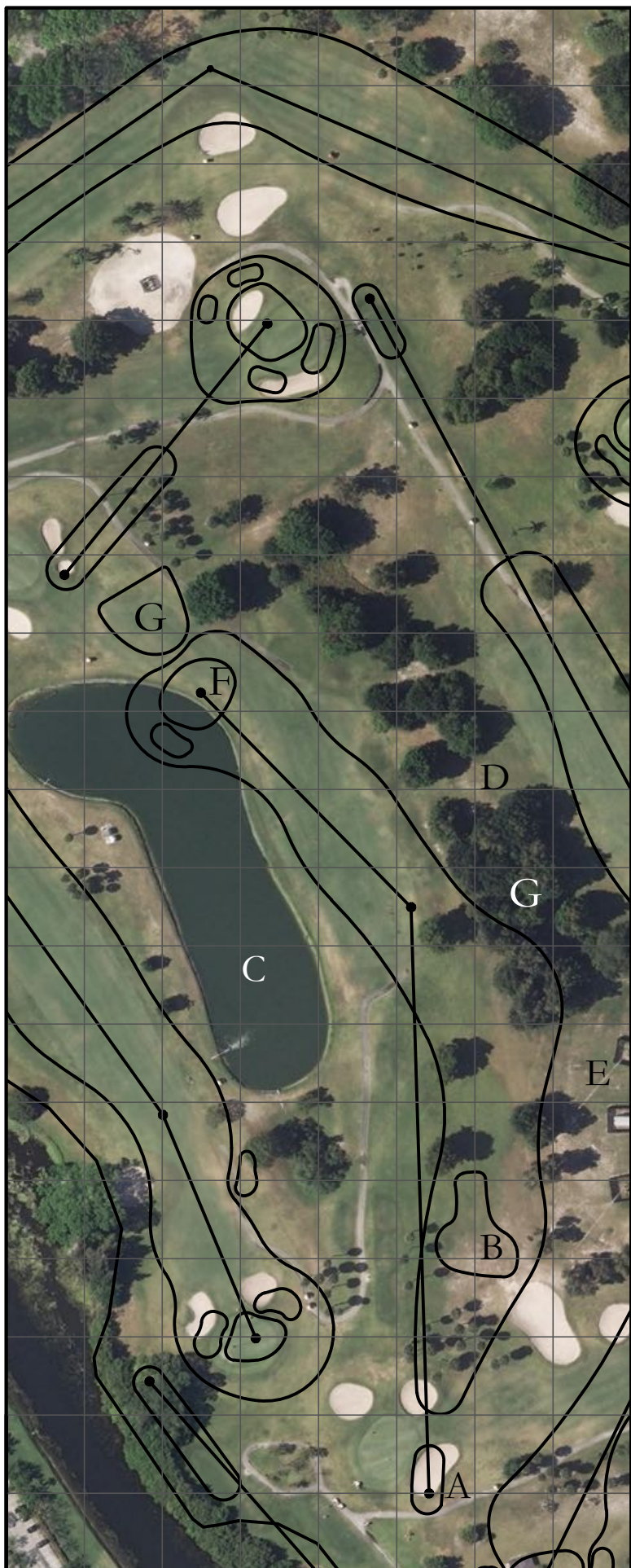
DESIGN PHILOSOPHY NOTES:

- A. The original tee was located 15 yards south of the current back tee. Forward tees were added over the years.
- B. Nuisance vegetation has grown up along the canal bank and block visibility of the green complex.
- C. The current fairway is approximately 40' narrower than the original layout.
- D. Bunker in the second landing was shifted from the left side to the right side in the mid 1960s.
- E. The green complex location, configuration and size is roughly the same as the original layout.
- F. The left side of the hole was originally designed as a native sand area.

Aerial shown taken in 2016.
Line work taken from 1953 aerial.

1 inch = 200'-0"





Hole No. 11 Par 4

Original Yardage
380

Dick Wilson

DESIGN PHILOSOPHY NOTES:

- A. The original tee was located 75 yards north of the current back tee. We believe this hole was played as the original 5th hole on the north 9. In the mid 1960s the tees were moved forward to their current location.
- B. There was a small pond located in front of the tee.
- C. Original layout did not include a pond down the left side. In the mid 1960s ponds were added and by the mid 2000s they were joined to form the current irrigation pond configuration.
- D. Along the right side of the hole it was original designed as a native sand area. Trees were planted in the 1960s.
- E. Radio transmission towers were erected around 1960.
- F. Green complex was reconfigured and shifted 100 yards to the south in the mid 1960s.
- G. Original layout had a small pond behind the green.
- H. Well that supplies the city with drinking water was added in the 2003.

Aerial shown taken in 2016.
Line work taken from 1953 aerial.

1 inch = 200'-0"



Hole No. 12 Par 3

Original Yardage
140

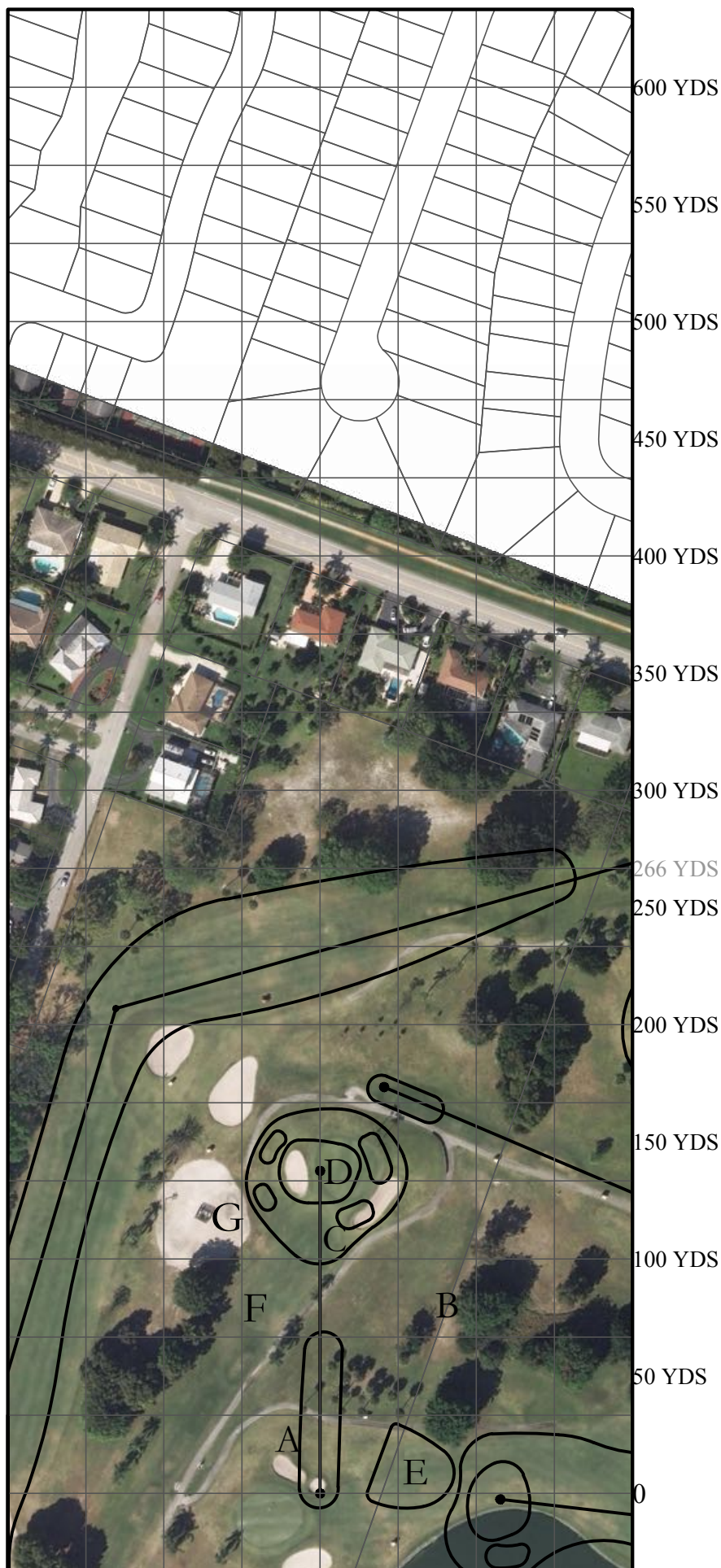
Dick Wilson

DESIGN PHILOSOPHY NOTES:

- A. The original tee was double the width and located 275' northwest of the current tee to create a hole that played in a more southwest direction.
- B. A small ditch ran along the right side of the hole and moved water over to the eastside canal.
- C. The original green complex was surrounded by four bunkers but there was still enough space for a player to run a shot onto the green.
- D. The current green is located in the same location as the original but it is approximately 35% smaller.
- E. There was a small pond located right of the tee.
- F. The left and right sides of the hole was original designed as native sand areas. A significant number of trees were planted in the 1960s.
- G. Well that supplies the city with drinking water was added in 2003.

Aerial shown taken in 2016.
Line work taken from 1953 aerial.

1 inch = 200'-0"





Hole No. 13 Par 4

Original Yardage
440

Dick Wilson

DESIGN PHILOSOPHY NOTES:

- A. The current back tee is located in the same location as the original tee but forward tees have been added over the years.
- B. Two fairway bunkers in the landing area were added in the mid 1960s.
- C. Today's green is 35% smaller than the original green.
- D. The green side bunker configuration, front left and front right, is the same as the original layout but the bunker short left of the green has been removed.
- E. Today's fairway is approximately 45' narrower than the original layout.
- F. Along the left and right side of the hole it was original designed as a native sand area. Trees were planted in the 1960s.

Aerial shown taken in 2016.
Line work taken from 1953 aerial.

1 inch = 200'-0"



Hole No. 14 Par 4

Original Yardage
355

Dick Wilson

DESIGN PHILOSOPHY NOTES:

- A. The original tee was located 10 yards west of the current back tee. Forward tees were added over the years.
- B. Bunkers were added in the right side of the landing area.
- C. The original green was 40% larger and was open in the front. The current green guarded by three bunkers.
- D. In the mid 1960s the hole was changed from a dogleg left to a straight hole.
- E. The left and right sides of the hole was original designed as a native sand area. Trees were planted in the mid 1960s.

Aerial shown taken in 2016.
Line work taken from 1953 aerial.

1 inch = 200'-0"



Hole No. 15 Par 3

Original Yardage
220

Dick Wilson

DESIGN PHILOSOPHY NOTES:

- A. The original tee was double the width and approximately 50 yards south of today's tee.
- B. Nuisance vegetation has grown up along the canal bank and blocks visibility of the green complex.
- C. Today's green is 35% smaller than the original green.
- D. The original green was well guarded on the left with a large bunker. A second bunker was added on right of the green in the mid 1960s..
- E. Today's fairway / approach is significantly smaller than the original layout.

Aerial shown taken in 2016.
Line work taken from 1953 aerial.

1 inch = 200'-0"



Hole No. 16 Par 4

Original Yardage
420

Dick Wilson

DESIGN PHILOSOPHY NOTES:

- A. The original tee is in the same general location as the current tee. Forward tees were added over the years.
- B. Bunkers in the landing area were reconfigured from a penal left and right side layout to two bunkers down the right side.
- C. The original green was 15% larger and had a "y" shape that offered "Sunday" pin placements behind both green side bunkers.
- D. The current right green side bunker is removed from the green and acts as "deception" bunker.
- E. With the expansion of Atlantic Avenue over the years the green is too close to the road (less than 100' from center of green to ROW).
- F. The left and right sides of the hole was original designed as a native sand area. Trees were planted in the mid 1960s.
- G. Non-native trees help protect errant shots from going into Atlantic Avenue.

Aerial shown taken in 2016.
Line work taken from 1953 aerial.

1 inch = 200'-0"





Hole No. 17 Par 4

Original Yardage
370

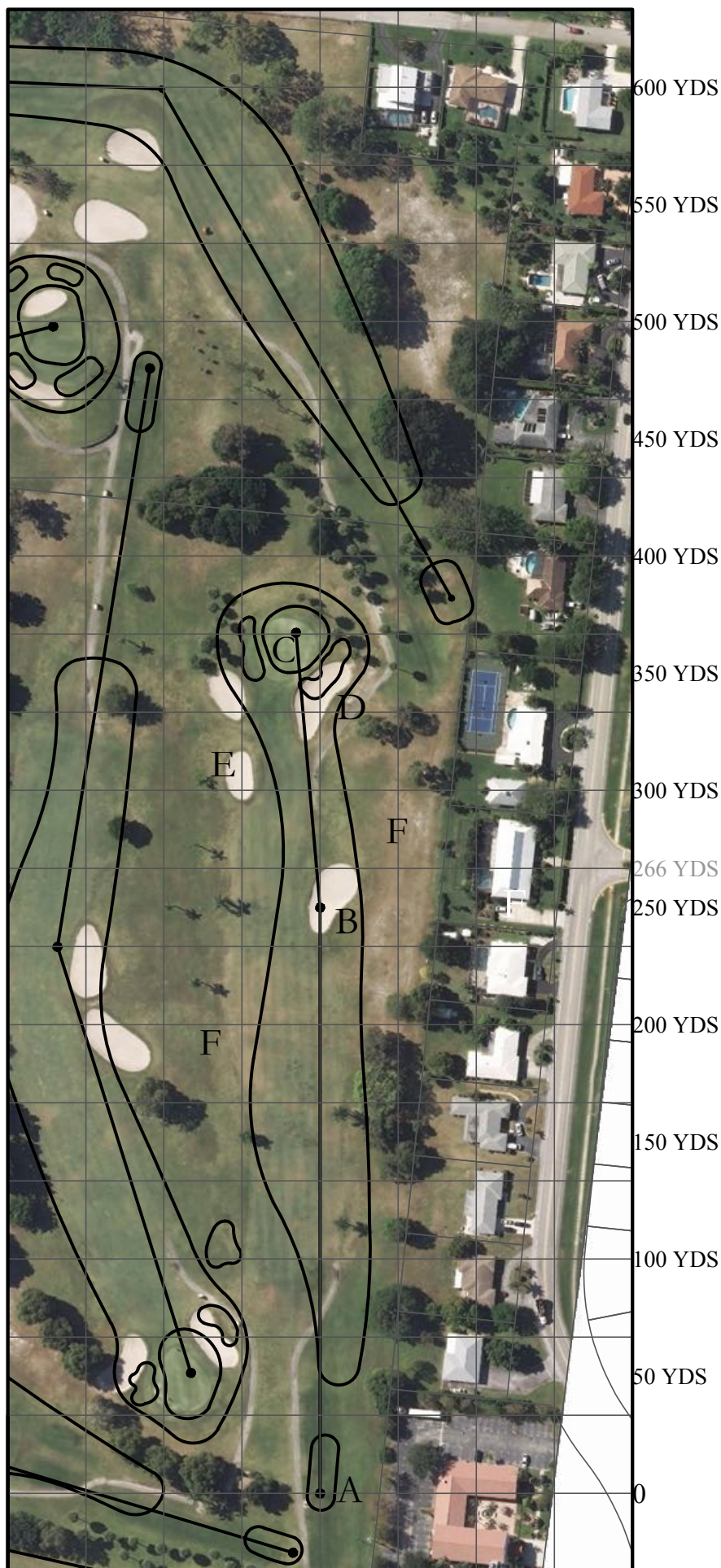
Dick Wilson

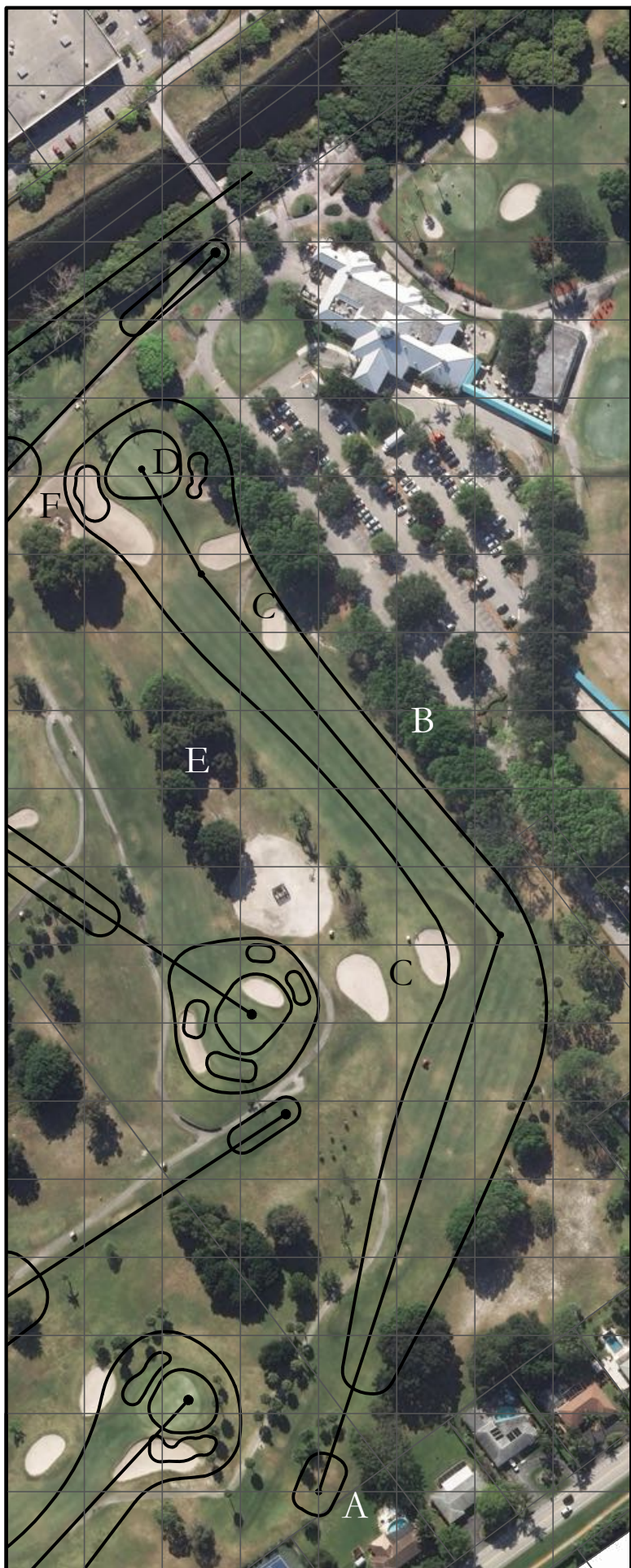
DESIGN PHILOSOPHY NOTES:

- A. The current back tee is 30 yards back from the original. Forward tees have been added over the years.
- B. Fairway bunkers were added in the mid 1960s.
- C. Today's green is 10% smaller than the original green.
- D. The green side bunker configuration is the similar to the original layout.
- E. Bunker short left of the green was added in the mid 1960s.
- F. Along the left and right sides of the hole it was originally designed as a native sand area.

Aerial shown taken in 2016.
Line work taken from 1953 aerial.

1 inch = 200'-0"





Hole No. 18 Par 5

Original Yardage
500

Dick Wilson

DESIGN PHILOSOPHY NOTES:

- A. Prior to the home being built the original tee was located along the current property line. Forward tees were added over the years.
- B. Ficus tree that line the right side of the hole were planted in the mid 1960s.
- C. Four fairway bunkers were added in the first and second landing areas in the mid 1960's.
- D. The green complex location, configuration and size is roughly the same as the original layout.
- E. The left side of the hole was original designed as a native sand area.
- F. Well that supplies the city with drinking water was added 80' left of the green in the 2003.

Aerial shown taken in 2016.
Line work taken from 1953 aerial.

1 inch = 200'-0"